

Clean lines and thoughtful detailing make a fine first impression from the street, but the real magic begins inside the Rose.



This cleverly designed five-bedroom home has been optimised to deliver a wealth of features, without compromising on space.

The ground floor is a haven for leisure. An inviting lounge awaits at the front entrance, while an enormous tiered theatre room beckons just a few steps down the hall. The back of the home is a hive of activity, with an open plan kitchen, dining and living area that leads onto an alfresco. A spacious butler's pantry will delight entertainers, while a fifth bedroom with private ensuite offers a quiet oasis for overnight guests.

Upstairs is the main sleeping quarters, boasting four generous bedrooms plus a study. Each bedroom has its own ensuite and walk-in robe, with the three minor bedrooms nestled around a versatile rumpus/library at the top of the landing. The master bedroom is perfectly positioned at the rear of the home – close enough to keep an eye on the kids, but far enough to maintain privacy.

Like all Marque luxury homes, the Rose can be customised to suit your unique needs. Speak to your consultant about how to personalise this floor plan.

ROSE Display Home

Address:
3 Rose Ave, Glen Waverley

Phone:
1300 062 778

Opening hours:
Sunday, 12pm - 5pm or by appointment

Rose 62 - Double Storey

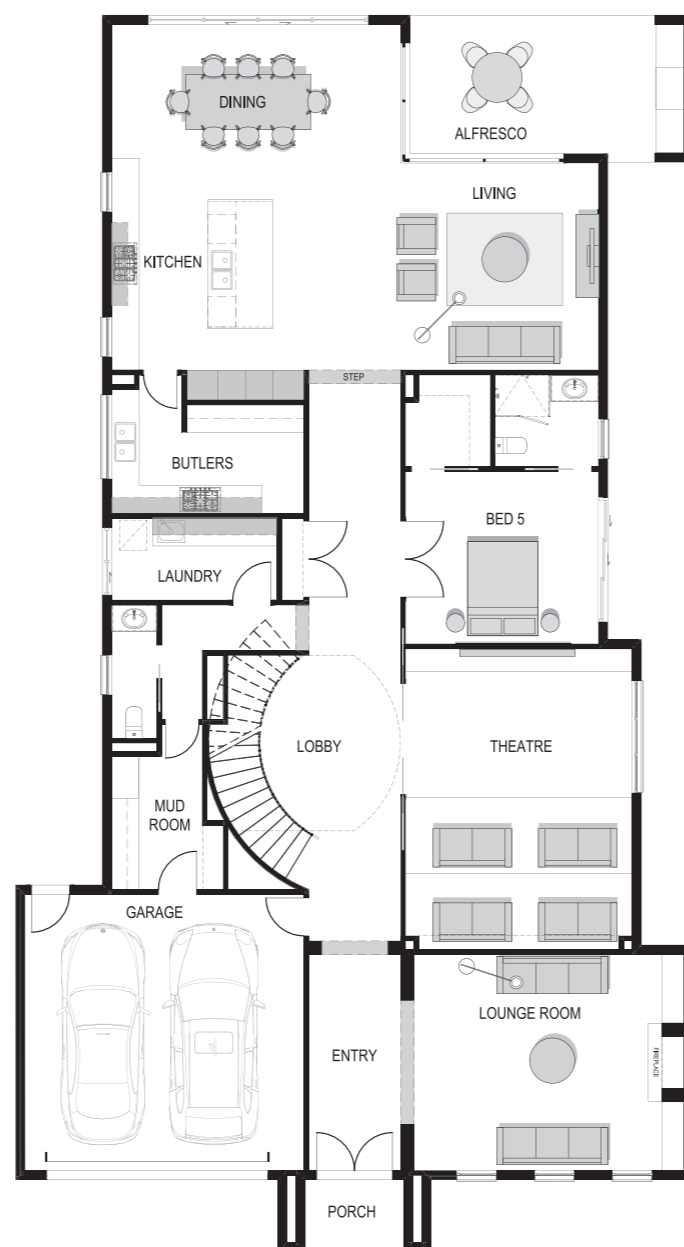
As displayed floor plan and facade

5 3 6 2

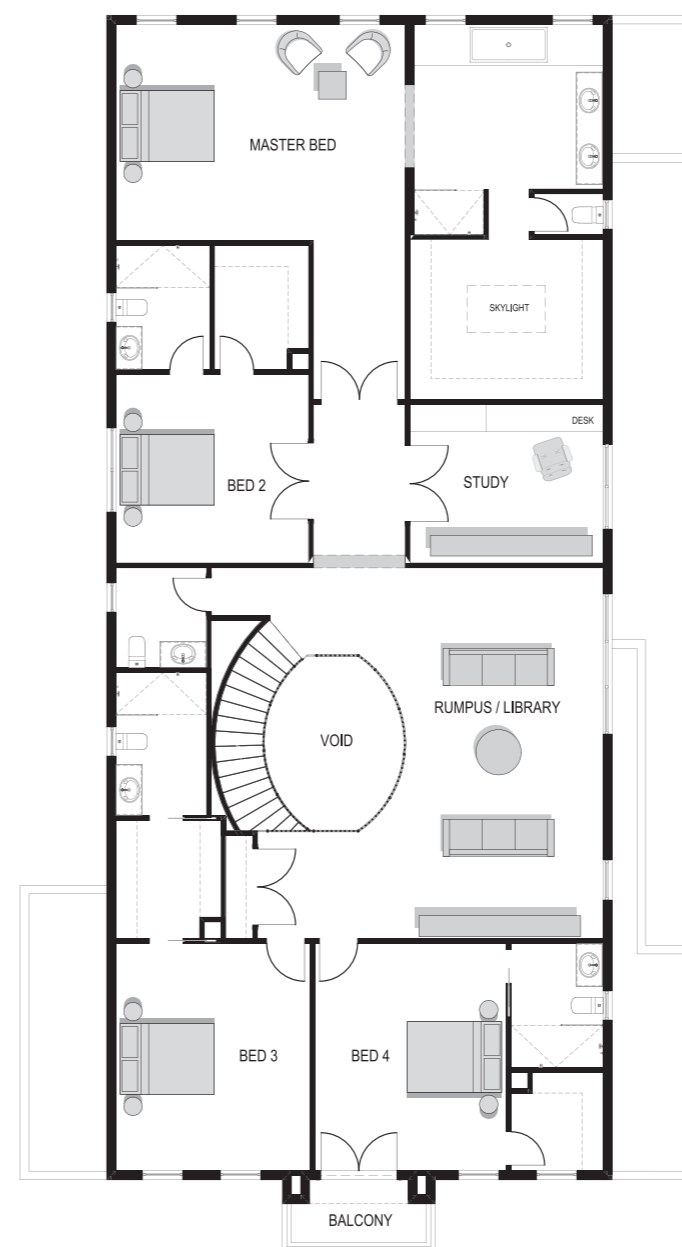
Dwelling Size

63.93 sq

Ground Floor- 26.80 sq First Floor - 29.75 sq
Garage - 4.08 sq Balcony - 0.49 sq
Alfresco - 2.02 sq
Porch - 0.55 sq



Ground Floor



First Floor

Display Home Highlights

External Features

- Premium terracotta roof tiles
- Facade fully rendered to all elevations
- Feature quoins
- Balcony with Julienne balustrading

Elevations

- 3000mm ceilings to ground floor
- Split-level to ground floor with 172mm step down to Lounge, Family, Meals and Kitchen

Internal Features

- Natural direct stick timber flooring plus premium quality carpets and underlay
- Jetmaster 550 gas fireplace to Lounge
- 2-Pac cabinetry and overhead cupboards to Kitchen, Laundry and Butler's
- Natural stone benchtops and splashbacks to Kitchen, Laundry and Butler's
- Natural stone canopy above Kitchen cooktop
- Curved MDF staircase with timber balustrade and wrought iron balusters
- 2600mm bi-parting sliding door and corner stacker sliding door to Meals
- Natural stone and wall tiles to Ensuite
- Freestanding Le Belle bath tub on podium to Ensuite
- Master WIR fit-out with cabinetry, soft-close drawers, shelves and fixed skylight



The builder reserves the right to substitute the make, model or type of any of the above products to maintain the quality and product development of its homes. Changes may be made subject to Res Code requirements. Imagery for illustrative purposes only. Marque Specifications V030817

QUE
DISPLAY

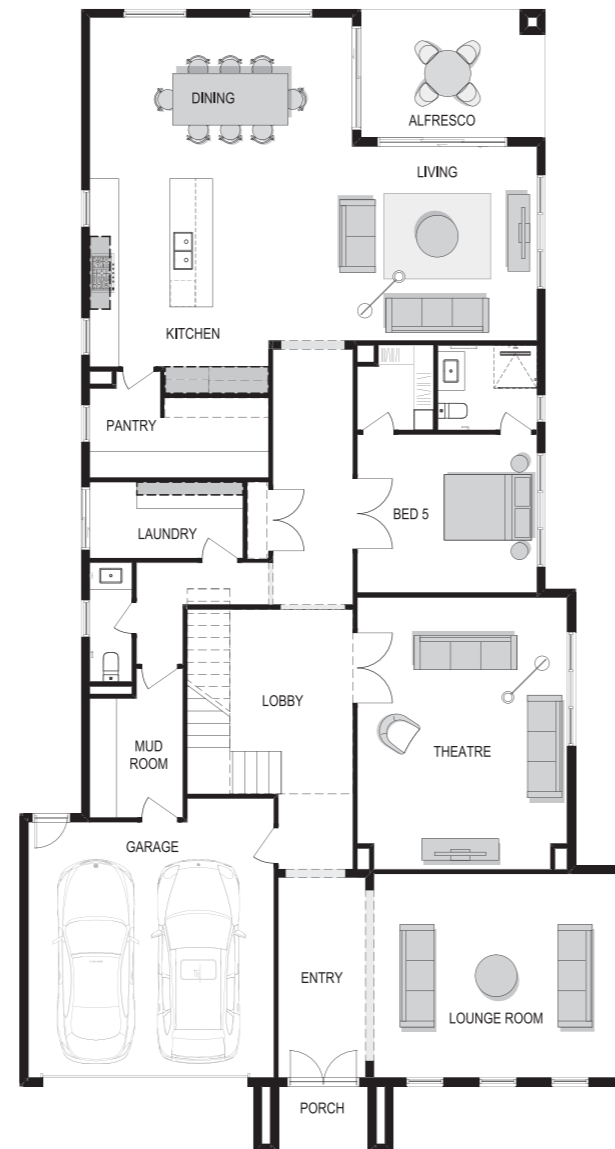
Rose 62 - Double Storey

Standard floor plan and facade

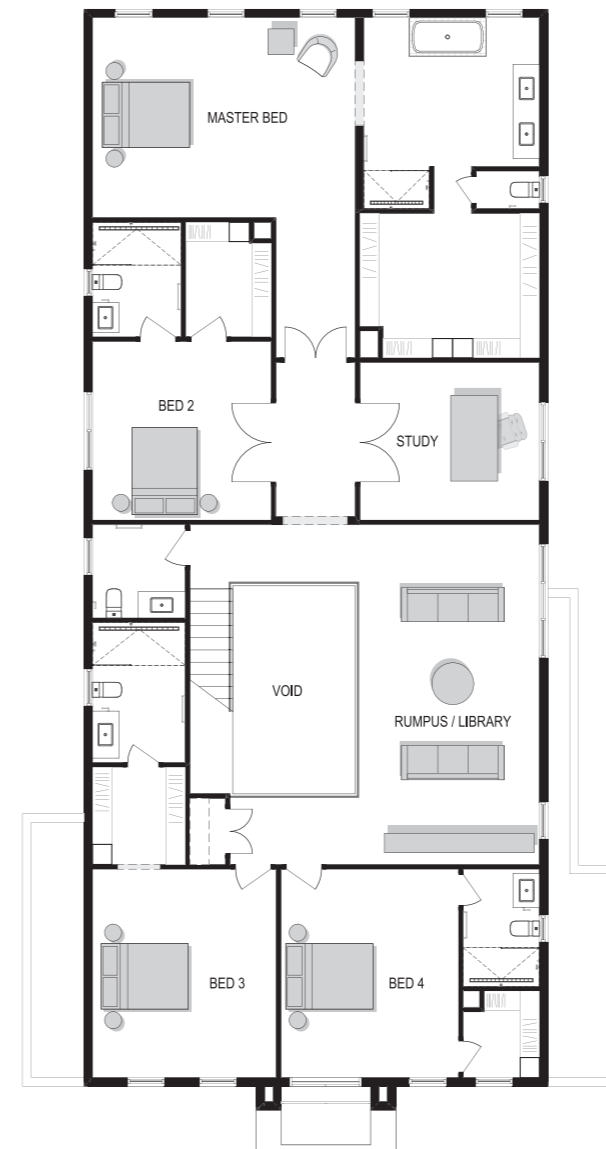
🛏️ 5 🪑 3 🚿 6 🚗 2

Dwelling Size
62.08 sq

Ground Floor - 26.49 sq Porch - 0.55 sq
Garage - 4.11 sq First Floor - 29.53 sq
Alfresco - 1.40 sq



Ground Floor



First Floor

Floor plans, facade images and photographs of this publication have been used for illustrative purposes only, and may not represent the final product. Standard facade is the Monarch. Information shown in this brochure is owned by Marque Property Group. No information or images from this brochure may be reproduced without prior written consent. Whilst every effort is made to ensure accurate information, this does not warrant that this brochure is free of errors or omissions. Marque does not accept responsibility for any loss, damage or cost associated as a result. 13.02.18

MAR
ROSE